

YA-02M

Surgical Table



*Better care
Better comfort!*

YA-02M

SURGICAL TABLE

YA-02M is a classic manual operating table which is simple to operate and convenient for the surgical team to ensure patient safety and comfort.

The surgical tables are hydraulically operated in elevation and crank operated in all of tabletop articulations through head-end control position. This avoids wasting time searching for controls above the operating table, or allocating the surgical team if the table needs to be adjusted during any surgery.

FEATURES

- 1.The surgical table is designed for procedures in the range of general surgery, vascular surgery, cardio surgery, neurosurgery, urology, proctology, gynecology and others.
 - 2.Four (Five) section tabletop with five (six) segments
 - 3.Operating table surfaces are easy to clean and resistant to disinfecting agents
 - 4.Tabletop height adjustment with use of hydraulic foot pump
 - 5.Divided, two parts leg rest segments are adjusted by means of gear transmission
 - 6.Lateral tilts, Trendelenburg and Reverse Trendelenburg, backrest functions are executed with the rods placed at the patient's head side
 - 7.Kidney elevator is adjusted manually with the use of crank placed at the patient's head side
- Double layer top surface for placement of X-ray holder tray(optional)

ITEM	PARAMETER	ITEM	PARAMETER
Overall size	2150*520*720-970mm	Mattress	1set
Back section up/down	80°/10°	Anesthesia screen	1piece
Head section up/down	45°/90°	Shoulder support	1pair
Leg section down	90°	Arm board	1pair
Reverse trendelenburg	20°	Body support	1pair
Trendelenburg	30°	Leg support	1pair
Lateral tilt left/right	15°	Foot plate	1pair
Kidney elevator mechanism	110mm	Kidney bridge handle	1piece
Load capacity	200kg	Fixing clamp	8pieces

Back section up motion
80°



Back section down motion
10°



Reverse trendelenburg
0-20°



Trendelenburg
0-30°



Lateral tilt right
0-15°



Lateral tilt left
0-15°



Leg section down
90°

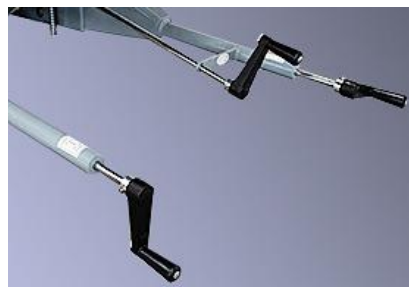


Head section down
90°



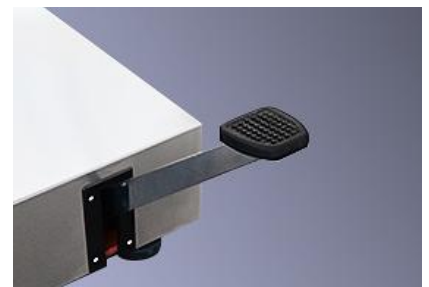
Material

The base and column material is stainless steel 304, which is easier to clean, modern and stable.



Manual control system

various actions are controlled by hydraulic pneumatic system and mechanical driven system. Adjust the back, left and right tilt, trend and reverse trend and waist bridge of the operating table through 3 cranks.



Height adjust

footstep hydraulic elevating, imported Y type sealing ring and is durable.



Brake system

The surgical table can be moved easily or in a stable position thanks to the special foot brake system.



kidney bridge

built-in kidney bridge, can be adjusted up to 110mm through the crank.

ABOUT US

Zhangjiagang Medi Medical Equipment Co.,Ltd, founded in 1995, with more than 20 years experience in developing hospital furniture, is one of the largest manufacturer of hospital bed, patient stretcher, medical cart and other related hospital furniture in China or even Asia.

Through scientific management complying with ISO9001&ISO13485, by adopting advanced facility like Germany TRUMPF CNC, Japan OTC Robot Welding, Auto-power coating line with Swiss GEMA gun , Medi focuses on providing brand quality product with CE approval.

Headquartered in Zhangjiagang nearby Shanghai, with subsidiary oversea offices in Hungary, Dubai, Thailand, New Zealand, Kenya, Colombia, Medi acting professionally and swiftly for both pre-sales and after-sales. The products are widely accepted by global clients, such as UK RIE hospital, UNIVERZITETNI KLINICNI CENTER, Kokilaben Dhirubhai Ambani Hospital, Singapore National University Hospital etc.



YOU TUBE



MEDIK

Pls scan the QR code for more info

www.mediksurgical.com | +86 139 6223 1292

Medik reserves the right to make changes without notice in design, specifications and models. The only warranty Medik makes is the express written warranty extended on the sale or rental of its products.

© 2022 Medik Services, Inc. ALL RIGHTS RESERVED. APR53703 rev 1 01-JAN-2022 ENG – US