

# MK-D500JL

Surgical And Exam Light



*Better care  
Better comfort!*

# MK-D500JL

## SURGICAL AND EXAM LIGHT

MK-D500JL is an excellent mobile surgical and exam light with the module design. Featured with excellent parameters such as lux and color temperature, as well as multi control modes for different kinds of surgeries, which makes it suitable for different surgeries and procedures for hospitals.

### FEATURES

- The independent heat dissipation system and independent optical unit are convenient for later maintenance.
- Independent maintenance can be realized without disassembling other irrelevant units during maintenance.
- Ultra-thin hollow shape lamp head, good laminar flow penetration effect.
- Manually adjust the spot to meet the needs of the size of the spot irradiation area.
- The constant current drive design is adopted to keep the working current in a stable state forever, greatly prolonging the service life.
- With the Osram light beads, ensure a long lifespan of over 50,000 hours, delivering enduring performance.

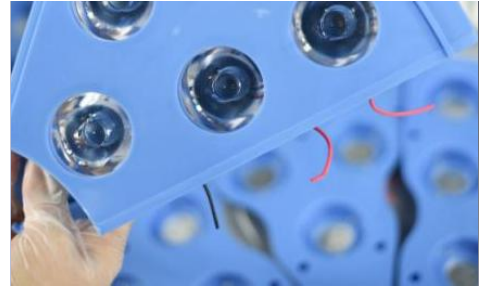
ITEM	PARAMETER
Model	MK-D500JL
Illuminance at a distance of 1 m (LUX)	40,000-160,000
Adjustable brightness	10-100%
Lamp head diameter	500MM
LED quantity	42pcs
Adjustable color temperature	3800-5500K
Color rendering index Ra	96
Color rendering index R9 (Red)	98
Adjustable light area size	120-280MM
Total radiation flux density	364W/m <sup>2</sup>
Endoscopy mode	Yes
LEDS endoscopy mode	18pcs

ITEM	PARAMETER
Lighting for Endo mode	25%
LED lifespan	80000hours
Main material	Aluminum
Rotation angle of lamp	>540°
LED bulb power	1w Each
Input power	400w
Operational element	Touch control
Lamp head protection degree	IP54+fireproof
Illumination depth L1+12	1100MM
led bulb brand	OSRAM
Packaging	3 wooden boxes
LCD touch screen	Optional
Backup battery (446 hours)	Optional

## PRODUCT DETAILS

### Modular components

Individual modular design(Bulb groups)minimizes the risk of whole light-off failure which offers great guarantee for surgery process, as well as minimize the maintenance costs.



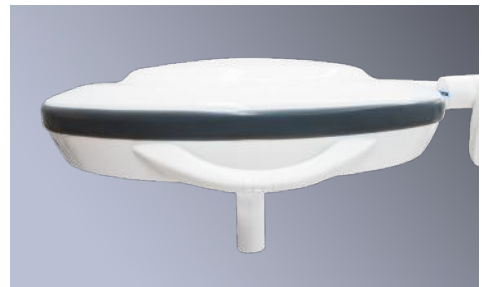
### Easy Practical Operation

Soft Light with eye protection,With simple operation buttons, easy to operate.



### Thin Light head

Engineering plastic ABS + Aluminum board, good heat dissipation and lighter weight.



### Basement electric quantity display

The H-shaped base provides enhanced stability for added security.With the screen showing the electric quantity.



## PRODUCT DETAILS

### Osram light beads

With the Osram light beads which known for exceptional brightness and clarity, ensure a long lifespan of over 50,000 hours, delivering enduring performance.

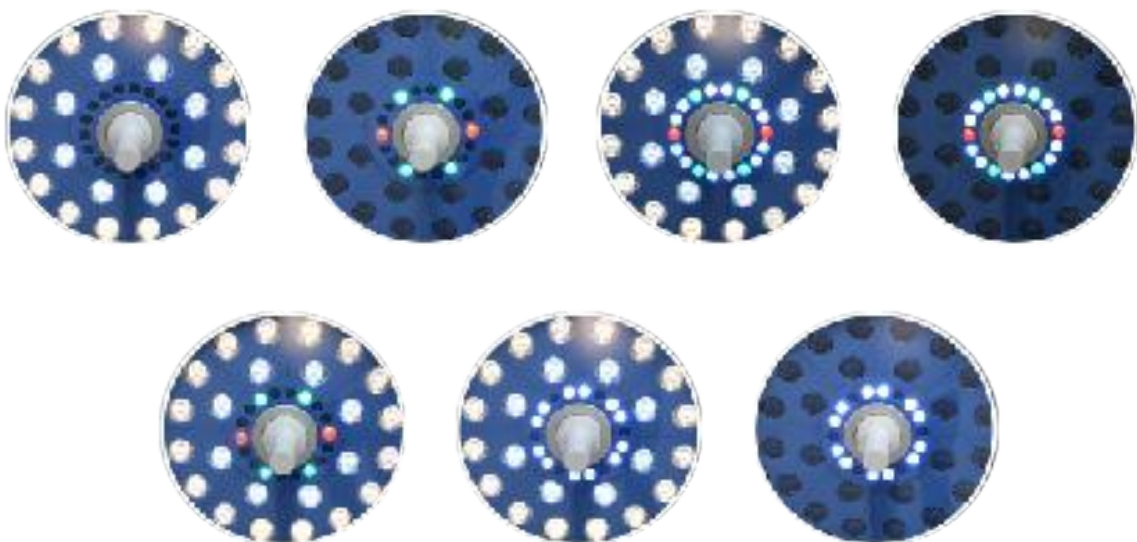


### Removable Handle

Handle can be disassembled and cleaned and disinfected.



### Several different modes



## ABOUT US

Zhangjiagang Medi Medical Equipment Co.,Ltd, founded in 1995, with more than 20 years experience in developing hospital furniture, is one of the largest manufacturer of hospital bed, patient stretcher, medical cart and other related hospital furniture in China or even Asia.

Through scientific management complying with ISO9001&ISO13485, by adopting advanced facility like Germany TRUMPF CNC, Japan OTC Robot Welding, Auto-power coating line with Swiss GEMA gun , Medi focuses on providing brand quality product with CE approval.

Headquartered in Zhangjiagang nearby Shanghai, with subsidiary oversea offices in Hungary, Dubai, Thailand, New Zealand, Kenya, Colombia, Medi acting professionally and swiftly for both pre-sales and after-sales. The products are widely accepted by global clients, such as UK RIE hospital, UNIVERZITETNI KLINICNI CENTER, Kokilaben Dhirubhai Ambani Hospital, Singapore National University Hospital etc.



YOU TUBE



MEDIK

**Pls scan the QR code for more info**

**[www.mediksurgical.com](http://www.mediksurgical.com) | +86 139 6223 1292**

Medik reserves the right to make changes without notice in design, specifications and models. The only warranty Medik makes is the express written warranty extended on the sale or rental of its products.

© 2022 Medik Services, Inc. ALL RIGHTS RESERVED. APR53703 rev 1 01-JAN-2022 ENG – US